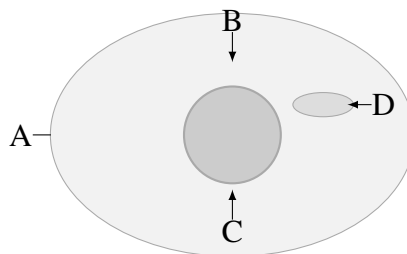


(C) kingdom and species

(D) species and variety

3. The diagram shows an animal cell. Which labelled structure controls the activities of the cell?



(A) A

(B) B

(C) C

(D) D

4. Which structure is found in plant cells but not usually in animal cells?

(A) Cell membrane

(B) Cell wall

(C) Cytoplasm

(D) Nucleus

5. Which list shows levels of organisation in the correct order from smallest to largest?

(A) cell → organ → tissue → organ system

(B) cell → tissue → organ → organ system

(C) tissue → cell → organ system → organ

(D) tissue → organ → cell → organ system

6. A student observes a cell under a microscope. The image size is 15 mm and the magnification is $\times 300$. What is the actual size of the cell?

(A) 0.05 mm

(B) 0.5 mm

(C) 20 mm

(D) 4500 mm

7. Which statement correctly describes diffusion?

(A) The net movement of particles from a region of lower concentration to higher concentration.